

## Information about living in Gifu City

### Multilingual Information from Gifu City's Website

40-1 Tsukasa-machi, Gifu City  
Gifu City Hall 10F (International Affairs Division)  
PHONE: 058-214-6125

Information necessary for foreign residents in their daily lives is posted in multiple languages.

【Available languages】 Easy Japanese, English, Chinese, Tagalog, Portuguese, Vietnamese

Easy Japanese



English



Simplified Chinese



Tagalog



Portuguese



Vietnamese



### In the event of a major disaster Gifu City Multilingual Disaster Support Center

Gifu City and the Gifu City International Exchange Association will set up this support center and provide support to foreigners if a massive magnitude 7 earthquake occurs within the city or if a large number of foreigners are affected and are in need of assistance.

① Provision of disaster-related information in multiple languages



② Consultation services for foreigners affected by disaster



③ Interpretation and translation services for foreigners experiencing difficulties in evacuation centers

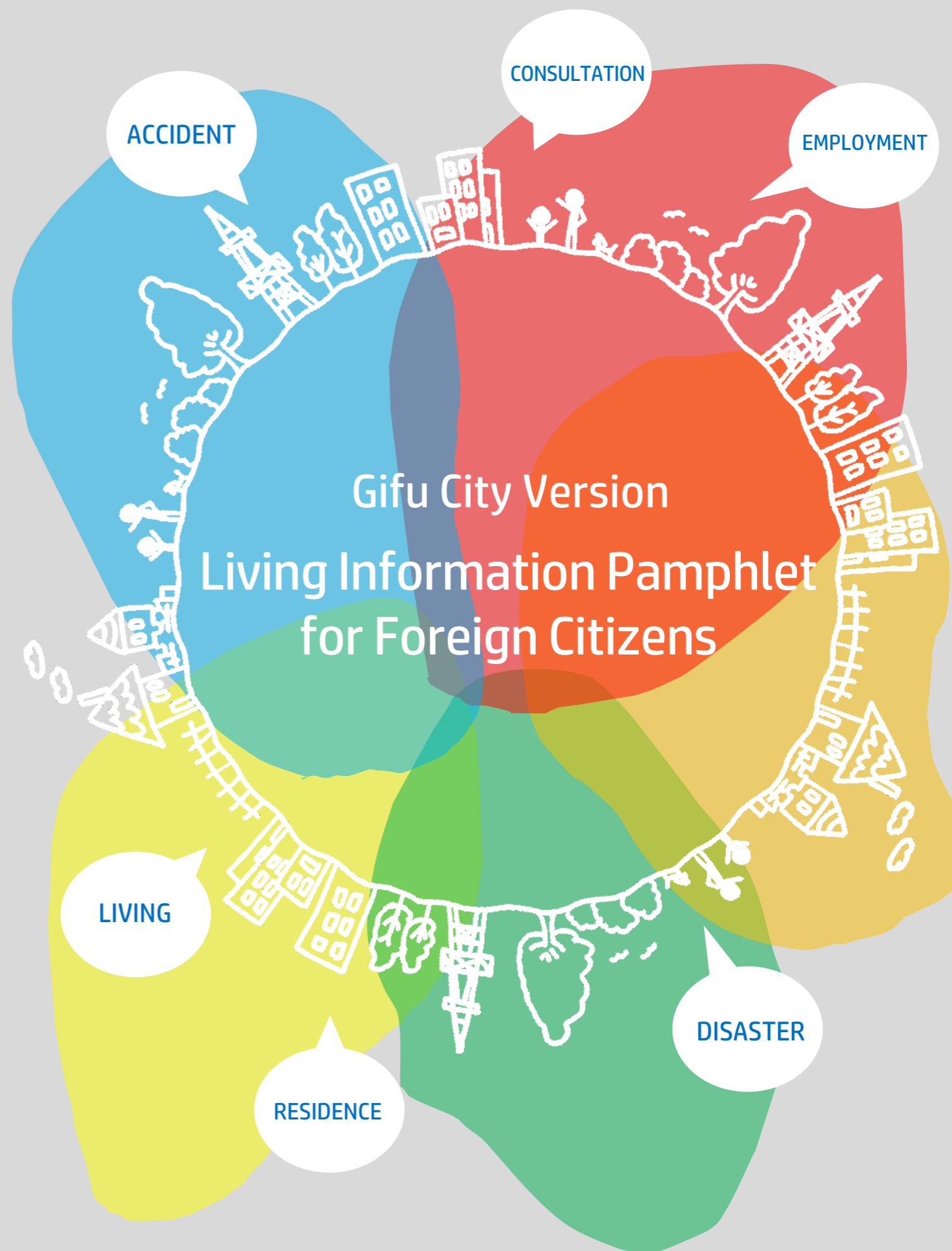


【Available languages】 English, Chinese, Tagalog, Portuguese, Vietnamese, Nepalese

【Location】 40-5 Tsukasa-machi, Gifu City  
Minna no Mori Gifu Media Cosmos 1F Multicultural Plaza  
PHONE: 058-263-1741  
E-MAIL: gk3700cc@ccn.aitai.ne.jp  
(If the above facility is not available, the support center will be set up in any city-related facilities.)

Gifu City  
International Exchange Association  
Facebook

Multilingual information  
will also be posted on  
Facebook



# Consultation Window

## Gifu City Multilingual Consultation Window

### Foreign Resident Consultation Counter

40-5 Tsukasa-machi, Gifu City  
Minna no Mori Gifu Media Cosmos 1F Multicultural Plaza  
PHONE: 058-263-1741 E-MAIL: gk3700cc@ccn.aitai.ne.jp

You can consult someone about concerns related to daily life.  
Interpreters can be dispatched and assist with procedures at Gifu City Hall.

- 【Available languages】 English, Chinese, Tagalog, Portuguese, Vietnamese, Nepalese
- 【Consultation method】 Window (in-person), Telephone, E-mail, Online (Zoom)  
(Languages available may vary depending on the day of the week.)
- 【Consultation hours】 10:00 - 12:00, 13:00 - 16:00 (excluding the New Year's period)



## Gifu Prefecture Multilingual Consultation Window

### Gifu Prefectural Consultation Center For Foreign Residents

1-12 Yanagase-dori, Gifu City, Gifu Chunichi Bldg.2F  
PHONE: 058-263-8066 E-MAIL: gic@gic.or.jp

This is a general consultation service in Gifu Prefecture, available in over 15 languages. Consultation with administrative scribes and lawyers, consultation regarding issues related to immigration and mental health, and administrative interpretation services via triophone (three-way call) ※, etc. are available.

- 【Available languages】 In-person, Telephone: Portuguese, Tagalog, Vietnamese, (English, Chinese)  
Telephone: Korean, Thai, Indonesian, Khmer, Nepalese, Burmese, Spanish, Malay, Mongolian, Ukrainian
- 【Consultation hours】 Monday to Friday 9:30 - 16:30  
(excluding the New Year's period and public holidays)

※ **Triophone** ... Allows three people to have a conversation at the same time through the telephone. An interpreter will assist you while using this service.

## Online consultation is available

### Yorisoi Hotline

PHONE: 0120-279-338  
FB(Messenger) <https://www.facebook.com/yorisoi2foreign>

You can talk about your feelings and troubles in multiple languages.

- 【Available languages】 English, Chinese, Korean, Tagalog, Portuguese, Spanish, Thai, Vietnamese, Nepalese, Indonesian
- 【Consultation method】 Telephone, Messenger (Languages available may vary depending on the day of the week and time of the day.)
- 【Consultation hours】 10:00 - 22:00



# Residence

## Residency Procedures

### Nagoya Regional Immigration Services Bureau Gifu Branch Office

2-7-2 Mieji-cho, Gifu City  
Gifu Legal Affairs Building Annex 4F  
PHONE: 058-214-6168

This is where you handle Japanese residency procedures (screenings, etc.) and apply for issuance of certificates related to status of residence.

- 【Consultation method】 In-person, Telephone
- 【Consultation hours】 9:00 - 16:00 (excluding Saturdays, Sundays and public holidays)



### ★ Ask here for inquiries

**Immigration Information Center** PHONE: 0570-013904 E-MAIL: info-tokyo@i.moj.go.jp (Japanese, English)

You can ask questions about immigration and residence procedures. They respond to inquiries via phone or e-mail in multiple languages.

# Employment

## Look for employment

### Hello Work Gifu GAIKOKUJIN Corner

1-9-1 Gotsubo, Gifu City  
PHONE: 058-206-5063



Employment counseling services are available for foreigners who are eligible to work.

- 【Available languages】 In-person, Telephone: Portuguese, Chinese, Tagalog  
Telephone: English, Chinese, Korean, Portuguese, Spanish, Tagalog, Vietnamese, Nepalese, Indonesian, Thai, Cambodian, Burmese, Mongolian
- 【Consultation method】 In-person, Telephone
- 【Consultation hours】 Monday to Friday 9:00 - 16:30 (excluding public holidays)  
<Telephone Interpretation> 8:30 - 17:15  
(excluding Saturdays, Sundays, public holidays, and New Year's period)



## Consultation about working conditions

### Labor Standards Advice Hotline

<https://www.check-roudou.mhlw.go.jp/lp/hotline/>



You can call to discuss work problems, such as illegal overtime or unpaid wages. Anyone can call from anywhere in Japan, free of charge.

- 【Available languages】 English, Chinese, Spanish, Portuguese, Tagalog, Vietnamese, Burmese, Nepalese, Korean, Thai, Indonesian, Cambodian (Khmer), Mongolian
- 【Consultation method】 Telephone (Please note that the phone numbers are different for each language. Please check the website.)
- 【Consultation hours】 Monday to Friday 17:00 - 22:00  
Saturdays, Sundays, public holidays 9:00 - 21:00  
(excluding the New Year's period)



# Accidents, emergencies, etc.

## When a crime or accident occurs

### Police PHONE 1 1 0

Call this number if you think you have been involved in a crime or when you are in a traffic accident. They will help you. Inform the person on the other line of the foreign language you wish to speak.

- 【Available languages】 English, Chinese, Korean, Thai, Vietnamese, Indonesian, Malay, (Triophone (three-way call) ※) Nepalese, Tagalog, Burmese, Khmer, Mongolian, Portuguese, Spanish, French, German, Italian, Russian



## In case of fire, emergency, and/or rescue

### Fire Station PHONE 1 1 9

Please call if there is a fire, or emergency assistance and/or rescue is needed. Inform the person on the other line of the foreign language you wish to speak.

- 【Available languages】 English, Chinese, Korean, Thai, Vietnamese, Indonesian, Malay, Nepalese, Tagalog, Burmese, Khmer, Mongolian, Portuguese, Spanish, French, German, Italian, Russian

